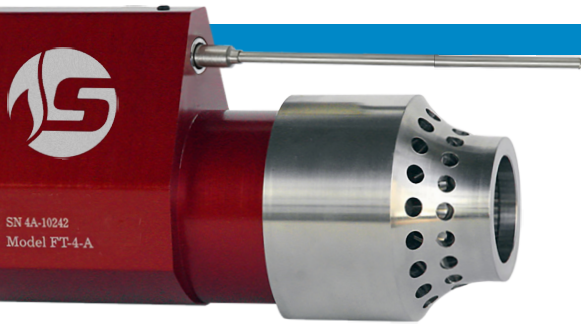


FT Ignition Units

PATENTED SPARKLESS TECHNOLOGY



NO ADJUSTMENT, NO CLEANING

- True plug and play
- Time-saving simple installation
- No gaps to set
- Armored, flame resistant, conduit-ready wiring
- Coil not required
- Compliant to API RP 12N flame arrestor testing

FEATURES

- SureFire Sparkless Ignition Technology
- 6061 grade aluminum body, anodized red
- 304 grade stainless steel nozzle
- Date coded, individually serialized
- Extreme cold weather service with proper fuel train
- Low power, 12 volt DC service
- High temperature ignition wiring to 1000°F
- Flame sensing with flame rod thermocouple

INTEGRATED FLAME SENSOR AVAILABLE IN TWO CONFIGURATIONS

Integrated Flame Sensor “F”

- Kanthal flame rod rated 2600°F
- Armored wiring harness to 500°F duty / 800°F flash

- Enclosed fire tube service

Integrated Flame Sensor “T”

- Type K thermocouple flame-sensing rated 2200°F
- Armored wiring harness to 1000°F duty / 1500°F flash
- Exposed combustor or incinerator service

PILOTLESS IGNITION UNITS



**FT-2-AF
FT-2-AT**

- Inlet: 1 inch NPT
- Duty: Pilotless, direct ignition of burner
- For use with Eclipse 1 inch mixer @ 125,000 Btu/h
- Use with non-piloted fuel train



**FT-4-AF
FT-4-AT**

- Inlet: 2 inch NPT
- Duty: Pilotless, direct ignition of main burner
- For use with Eclipse 2 inch mixer @ 500,000 Btu/h
- Use with non-piloted fuel train



**FT-4-AF VT
FT-4-AT VT**

- Inlet: 2 inch NPT
- Duty: Pilotless, direct ignition of main burner
- For use with Eclipse 2 inch mixer @ 500,000 Btu/h
- Use with non-piloted fuel train
- For vertical treaters applications
- Patented Nozzle Design



**FT-6-AF
FT-6-AT**

- Inlet: 3 inch NPT
- Duty: Pilotless, direct ignition of main burner
- For use with Eclipse 3 inch mixer @ 1,000,000 Btu/h
- Use with non-piloted fuel train



**FT-6-AF VT
FT-6-AT VT**

- Inlet: 3 inch NPT
- Duty: Pilotless, direct ignition of main burner
- For use with Eclipse 3 inch mixer @ 1,000,000 Btu/h
- Use with non-piloted fuel train
- *For vertical treaters applications
- Patented Nozzle Design



surefire-controls.com
Designed and manufactured in the U.S.A.

over **350**
MILLION HOURS
of safe burner control

PILOTED IGNITION UNITS



FT-1-ESF**
FT-1-EST**

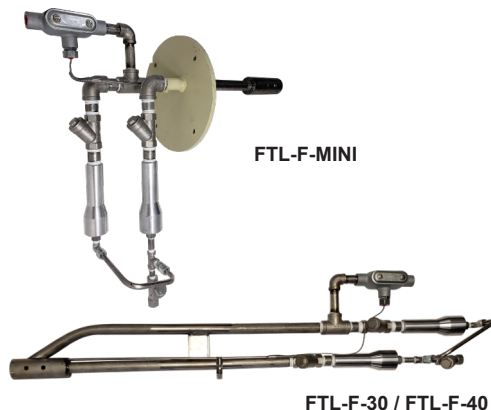
- Inlet: ½ inch NPT
- Duty: Piloted
- Use with pilot venturi, #72 orifice
- Patented Product
- **Over 1 million Btu/hr rating requires a pilot

FTL-F-MINI / FTL-F-30 / FTL-F-40

COMBUSTOR PILOT

Piloted Ignition

- Compatible with the BMS-100 and BMS-350
- Flame sensing with thermocouple
- Services combustors and enclosed flares
- Gas Inlet: ¼ inch NPT
- Patented Product



FTL-F-72, FTL-F-96, & FTL-F-200

LARGER FLARE PILOT FOR HARSH CONDITIONS

Piloted Ignition

- Compatible with the BMS-100 and BMS-350
- Flame sensing with thermocouple
- Services piloted flares
- Gas Inlet: ¼ inch NPT
- Patented Product



Igniter	Type	Btu/hr (net)*	Inlet Size	BMS-100	BMS-300	BMS-350
FT-1-ESF**	Piloted	N/A	½" NPT		✓	✓
FT-1-EST**	Piloted	N/A	½" NPT	✓		✓
FT-2-AF	Pilotless	125,000	1" NPT		✓	✓
FT-2-AT	Pilotless	125,000	1" NPT	✓		✓
FT-4-AF	Pilotless	500,000	2" NPT		✓	✓
FT-4-AT	Pilotless	500,000	2" NPT	✓		✓
FT-4-AF VT*	Pilotless	500,000	2" NPT		✓	✓
FT-4-AT VT*	Pilotless	500,000	2" NPT	✓		✓
FT-6-AF	Pilotless	1,000,000	3" NPT		✓	✓
FT-6-AT	Pilotless	1,000,000	3" NPT	✓		✓
FT-6-AF VT*	Pilotless	1,000,000	3" NPT		✓	✓
FT-6-AT VT*	Pilotless	1,000,000	3" NPT	✓		✓
FTL-F-MINI	Piloted	N/A	¼" NPT	✓		✓
FTL-F-30	Piloted	N/A	¼" NPT	✓		✓
FTL-F-40	Piloted	N/A	¼" NPT	✓		✓
FTL-F-72, 96 & 200	Piloted	N/A	¼" NPT	✓		✓

*For vertical treater applications

**Over 1 million Btu/hr rating requires a pilot

Revised 01.31.2023



Surefire Burner Management Systems
1910 Rustic Place
Farmington, New Mexico 87401
505-333-2878
surefire-controls.com

Designed and manufactured in the U.S.A.